

Test Report

No. SZXEC2000993304

Date: 26 May 2020

Page 1 of 8

SHENZHEN JDT FUSE INDUSTRIAL CO.,LTD

ROOM 302, 3F, Y1 BUILDING, BANTIAN CREATIVE PARK, YAYUAN ROAD, LONGGANG DISCTRICT, SHENZHEN

The following sample(s) was/were submitted and identified on behalf of the clients as : Ceramic Fuse(JFC5F1600N)

SGS Job No. : RP20-009476 - SZ
Model No. : JFC5F1600N
Client Ref. Info. : Please see REMARK 3
Date of Sample Received : 19 May 2020
Testing Period : 19 May 2020 - 22 May 2020
Test Requested : Selected test(s) as requested by client.
Test Method : Please refer to next page(s).
Test Results : Please refer to next page(s).

Signed for and on behalf of
SGS-CSTC Standards Technical Services Co., Ltd. Shenzhen Branch

Tina

Tina Fan
Approved Signatory



Unless otherwise agreed in writing, this document is issued by the Company subject to its General Conditions of Service printed overleaf, available on request or accessible at <http://www.sgs.com/en/Terms-and-Conditions.aspx> and, for electronic format documents, subject to Terms and Conditions for Electronic Documents at <http://www.sgs.com/en/Terms-and-Conditions/Terms-e-Documents.aspx>. Attention is drawn to the limitation of liability, indemnification and jurisdiction issues defined therein. Any holder of this document is advised that information contained hereon reflects the Company's findings at the time of its intervention only and within the limits of Client's instructions, if any. The Company's sole responsibility is to its Client and this document does not exonerate parties to a transaction from exercising all their rights and obligations under the transaction documents. This document cannot be reproduced except in full, without prior written approval of the Company. Any unauthorized alteration, forgery or falsification of the content or appearance of this document is unlawful and offenders may be prosecuted to the fullest extent of the law. Unless otherwise stated the results shown in this test report refer only to the sample(s) tested.
Attention: To check the authenticity of testing /inspection report & certificate, please contact us at telephone: (86-755) 8307 1443, or email: CN.Doccheck@sgs.com
SGS Bldg, No.4, Jianghao Industrial Park, No.430, Jihua Road, Bantian, Longgang District, Shenzhen, China 518129 t (86-755) 25328888 f (86-755) 83106190 www.sgs.com.cn
中国·深圳·龙岗区坂田吉华路430号江灏工业园4栋SGS大楼 邮编: 518129 t (86-755) 25328888 f (86-755) 83106190 e sgs.china@sgs.com

Test Results :

Test Part Description :

Specimen No.	SGS Sample ID	Description
SN1	SZX20-009933.004	"Ceramic Fuse(JFC5F1600N)"(mixed)

Remarks :

- (1) 1 mg/kg = 1 ppm = 0.0001%
- (2) MDL = Method Detection Limit
- (3) ND = Not Detected (< MDL)
- (4) "-" = Not Regulated

Elemental analysis, Hexavalent Chromium(Cr(VI)), Flame Retardants, Phthalates

Test Method : With reference to IEC 62321-4:2013+AMD1:2017, IEC62321-5:2013, IEC62321-7-2:2017, IEC 62321-6:2015 and IEC62321-8:2017, analyzed by ICP-OES, UV-Vis and GC-MS.

Test Item(s)	Limit	Unit	MDL	004
Cadmium (Cd)	100	mg/kg	2	ND
Lead (Pb)	1,000	mg/kg	2	7
Mercury (Hg)	1,000	mg/kg	2	ND
Hexavalent Chromium (Cr(VI))	1,000	mg/kg	8	ND
Sum of PBBs	1,000	mg/kg	-	ND
Monobromobiphenyl	-	mg/kg	5	ND
Dibromobiphenyl	-	mg/kg	5	ND
Tribromobiphenyl	-	mg/kg	5	ND
Tetrabromobiphenyl	-	mg/kg	5	ND
Pentabromobiphenyl	-	mg/kg	5	ND
Hexabromobiphenyl	-	mg/kg	5	ND
Heptabromobiphenyl	-	mg/kg	5	ND
Octabromobiphenyl	-	mg/kg	5	ND
Nonabromobiphenyl	-	mg/kg	5	ND
Decabromobiphenyl	-	mg/kg	5	ND
Sum of PBDEs	1,000	mg/kg	-	ND
Monobromodiphenyl ether	-	mg/kg	5	ND
Dibromodiphenyl ether	-	mg/kg	5	ND
Tribromodiphenyl ether	-	mg/kg	5	ND
Tetrabromodiphenyl ether	-	mg/kg	5	ND
Pentabromodiphenyl ether	-	mg/kg	5	ND



Unless otherwise agreed in writing, this document is issued by the Company subject to its General Conditions of Service printed overleaf, available on request or accessible at <http://www.sgs.com/en/Terms-and-Conditions.aspx> and, for electronic format documents, subject to Terms and Conditions for Electronic Documentations at <http://www.sgs.com/en/Terms-and-Conditions/Terms-e-Documents.aspx>. Attention is drawn to the limitation of liability, indemnification and jurisdiction issues defined therein. Any holder of this document is advised that information contained hereon reflects the Company's findings at the time of its intervention only and within the limits of Client's instructions, if any. The Company's sole responsibility is to its Client and this document does not exonerate parties to a transaction from exercising all their rights and obligations under the transaction documents. This document cannot be reproduced except in full, without prior written approval of the Company. Any unauthorized alteration, forgery or falsification of the content or appearance of this document is unlawful and offenders may be prosecuted to the fullest extent of the law. Unless otherwise stated the results shown in this test report refer only to the sample(s) tested.

Attention: To check the authenticity of testing / inspection report & certificate, please contact us at telephone: (86-755) 8307 1443, or email: CN.Doccheck@sgs.com

SGS Bldg, No.4, Jianghao Industrial Park, No.430, Jihua Road, Bantian, Longgang District, Shenzhen, China 518129 t (86-755) 25328888 f (86-755) 83106190 www.sgs.com.cn
 中国·深圳·龙岗区坂田吉华路430号江灏工业园4栋SGS大楼 邮编: 518129 t (86-755) 25328888 f (86-755) 83106190 e sgs.china@sgs.com

Test Report

No. SZXEC2000993304

Date: 26 May 2020

Page 3 of 8

<u>Test Item(s)</u>	<u>Limit</u>	<u>Unit</u>	<u>MDL</u>	<u>004</u>
Hexabromodiphenyl ether	-	mg/kg	5	ND
Heptabromodiphenyl ether	-	mg/kg	5	ND
Octabromodiphenyl ether	-	mg/kg	5	ND
Nonabromodiphenyl ether	-	mg/kg	5	ND
Decabromodiphenyl ether	-	mg/kg	5	ND
Dibutyl Phthalate (DBP)	1000	mg/kg	50	ND
Butyl benzyl Phthalate (BBP)	1000	mg/kg	50	ND
Bis(2-ethylhexyl) Phthalate (DEHP)	1000	mg/kg	50	ND
Diisobutyl Phthalate (DIBP)	1000	mg/kg	50	ND

Remark1: The sample(s) was/were analyzed on behalf of the applicant as mixing sample in one testing. The above result(s) was/were only given as the informality value and only for reference.

Remark2: The limit(s) was/were submitted by applicant.



Unless otherwise agreed in writing, this document is issued by the Company subject to its General Conditions of Service printed overleaf, available on request or accessible at <http://www.sgs.com/en/Terms-and-Conditions.aspx> and, for electronic format documents, subject to Terms and Conditions for Electronic Documents at <http://www.sgs.com/en/Terms-and-Conditions/Terms-e-Documents.aspx>. Attention is drawn to the limitation of liability, indemnification and jurisdiction issues defined therein. Any holder of this document is advised that information contained hereon reflects the Company's findings at the time of its intervention only and within the limits of Client's instructions, if any. The Company's sole responsibility is to its Client and this document does not exonerate parties to a transaction from exercising all their rights and obligations under the transaction documents. This document cannot be reproduced except in full, without prior written approval of the Company. Any unauthorized alteration, forgery or falsification of the content or appearance of this document is unlawful and offenders may be prosecuted to the fullest extent of the law. Unless otherwise stated the results shown in this test report refer only to the sample(s) tested.

Attention: To check the authenticity of testing / inspection report & certificate, please contact us at telephone: (86-755) 8307 1443, or email: CN.Doccheck@sgs.com
 SGS Bldg, No.4, Jianghao Industrial Park, No.430, Jihua Road, Bantian, Longgang District, Shenzhen, China 518129 t (86-755) 25328888 f (86-755) 83106190 www.sgs.com.cn
 中国·深圳·龙岗区坂田吉华路430号江灏工业园4栋SGS大楼 邮编: 518129 t (86-755) 25328888 f (86-755) 83106190 e sgs.china@sgs.com

REMARK 3:

JFC3F0100L/JFC3F0125L/ JFC3F0160L/ JFC3F0200L/ JFC3F0250L/ JFC3F0300L/ JFC3F0315L/ JFC3F0350L/ JFC3F0400L/ JFC3F0500L/ JFC3F0630L/ JFC3F0750L/ JFC3F0800L/JFC3F1100L/ JFC3F1125L/ JFC3F1150L/ JFC3F1160L/ JFC3F1200L/ JFC3F1250L/JFC3F1300L/ JFC3F1315L/ JFC3F1350L/ JFC3F1400L/ JFC3F1500L/ JFC3F1600L/ JFC3F1630L/ JFC3F1700L/ JFC3F1800L/ JFC3F2100L/ JFC3F2160L/ JFC3F2200L/JFC3F2250L/ JFC3F2300L/ JFC3F0100N/JFC3F0125N/ JFC3F0160N/ JFC3F0200N/ JFC3F0250N/ JFC3F0300N/ JFC3F0315N/ JFC3F0350N/ JFC3F0400N/ JFC3F0500N/ JFC3F0630N/ JFC3F0750N/ JFC3F0800N/JFC3F1100N/ JFC3F1125N/ JFC3F1150N/ JFC3F1160N/ JFC3F1200N/ JFC3F1250N/JFC3F1300N/ JFC3F1315N/ JFC3F1350N/ JFC3F1400N/ JFC3F1500N/ JFC3F1600N/JFC3F1630N/ JFC3F1700N/ JFC3F1800N/ JFC3F2100N/ JFC3F2160N/ JFC3F2200N/ JFC3F2250N/ JFC3F2300N/ JFC3T0100L/ JFC3T0125L/ JFC3T0160L/ JFC3T0200L/ JFC3T0250L/ JFC3T0300L/ JFC3T0315L/ JFC3T0350L/ JFC3T0400L/ JFC3T0500L/ JFC3T0630L/ JFC3T0750L/ JFC3T0800L/ JFC3T1100L/ JFC3T1125L/ JFC3T1150L/ JFC3T1160L/JFC3T1200L/JFC3T1250L/JFC3T1300L/JFC3T1315L/ JFC3T1350L/ JFC3T1400L/ JFC3T1500L/ JFC3T1600L/ JFC3T1630L/ JFC3T1700L/ JFC3T1800L/ JFC3T2100L/ JFC3T2160L/ JFC3T2200L/ JFC3T2250L/ JFC3T2300L/ JFC3T0100N/ JFC3T0125N/ JFC3T0160N/ JFC3T0200N/ JFC3T0250N/ JFC3T0300N/ JFC3T0315N/ JFC3T0350N/ JFC3T0400N/ JFC3T0500N/ JFC3T0630N/ JFC3T0750N/ JFC3T0800N/ JFC3T1100N/ JFC3T1125N/ JFC3T1150N/ JFC3T1160N/ JFC3T1200N/JFC3T1250N/ JFC3T1300N/ JFC3T1315N/ JFC3T1350N/ JFC3T1400N/ JFC3T1500N/JFC3T1600N/ JFC3T1630N/ JFC3T1700N/ JFC3T1800N/ JFC3T2100N/ JFC3T2160N/ JFC3T2200N/ JFC3T2250N/ JFC3T2300N/ JFC5F0100N/ JFC5F0125N/ JFC5F0160N/ JFC5F0200N/ JFC5F0250N/ JFC5F0300N/ JFC5F0315N/ JFC5F0350N/ JFC5F0400N/ JFC5F0500N/ JFC5F0630N/ JFC5F0800N/ JFC5F1100N/ JFC5F1125N/ JFC5F1150N/ JFC5F1160N/ JFC5F1200N/ JFC5F1250N/ JFC5F1315N/ JFC5F1350N/ JFC5F1400N/ JFC5F1500N/ JFC5F1600N/JFC5F1630N/ JFC5F1800N/ JFC5F2100N/ JFC5F2125N/ JFC5F2160N/ JFC5F2200N/ JFC5F2250N/ JFC5F2300N/ JFC5F2400N/ JFC5F0300L/ JFC5F0350L/ JFC5F0100L/ JFC5F0125L/ JFC5F0160L/ JFC5F0200L/ JFC5F0250L/ JFC5F0315L/ JFC5F0400L/ JFC5F0500L/ JFC5F0630L/ JFC5F0800L/ JFC5F1100L/ JFC5F1125L/ JFC5F1150L/ JFC5F1160L/ JFC5F1200L/ JFC5F1250L/ JFC5F1315L/ JFC5F1350L/ JFC5F1400L/ JFC5F1500L/ JFC5F1600L/ JFC5F1630L/ JFC5F1800L/ JFC5F2100L/ JFC5F2125L/ JFC5F2160L/ JFC5F2200L/ JFC5F2250L/ JFC5F2300L/ JFC5F2400L/ JFC5T0100N/ JFC5T0125N/ JFC5T0160N/ JFC5T0200N/ JFC5T0300N/ JFC5T0350N/ JFC5T0250N/ JFC5T0315N/ JFC5T0400N/ JFC5T0500N/ JFC5T0630N/ JFC5T0750N/



Unless otherwise agreed in writing, this document is issued by the Company subject to its General Conditions of Service printed overleaf, available on request or accessible at <http://www.sgs.com/en/Terms-and-Conditions.aspx> and, for electronic format documents, subject to Terms and Conditions for Electronic Documents at <http://www.sgs.com/en/Terms-and-Conditions/Terms-e-Documents.aspx>. Attention is drawn to the limitation of liability, indemnification and jurisdiction issues defined therein. Any holder of this document is advised that information contained hereon reflects the Company's findings at the time of its intervention only and within the limits of Client's instructions, if any. The Company's sole responsibility is to its Client and this document does not exonerate parties to a transaction from exercising all their rights and obligations under the transaction documents. This document cannot be reproduced except in full, without prior written approval of the Company. Any unauthorized alteration, forgery or falsification of the content or appearance of this document is unlawful and offenders may be prosecuted to the fullest extent of the law. Unless otherwise stated the results shown in this test report refer only to the sample(s) tested.

Attention: To check the authenticity of testing / inspection report & certificate, please contact us at telephone: (86-755) 8307 1443, or email: CN.Doccheck@sgs.com

SGS Bldg, No.4, Jianghao Industrial Park, No.430, Jihua Road, Bantian, Longgang District, Shenzhen, China 518129 t (86-755) 25328888 f (86-755) 83106190 www.sgs.com.cn
中国·深圳·龙岗区坂田吉华路430号江灏工业园4栋SGS大楼 邮编: 518129 t (86-755) 25328888 f (86-755) 83106190 e sgs.china@sgs.com

JFC5T0800N/ JFC5T1100N/ JFC5T1125N/ JFC5T1150N/ JFC5T1160N/ JFC5T1200N/ JFC5T1250N/ JFC5T1300N/
JFC5T1315N/ JFC5T1350N/ JFC5T1400N/ JFC5T1500N/ JFC5T1600N/ JFC5T1630N/ JFC5T1700N/ JFC5T1800N/
JFC5T2100N/ JFC5T2120N/ JFC5T2125N/ JFC5T2150N/ JFC5T2160N/ JFC5T2200N/ JFC5T2250N/ JFC5T2300N/
JFC5T2400N/ JFC5T0100L/ JFC5T0125L/ JFC5T0160L/ JFC5T0200L/ JFC5T0300L/ JFC5T0350L/ JFC5T0250L/
JFC5T0315L/ JFC5T0400L/ JFC5T0500L/ JFC5T0630L/ JFC5T0750L/ JFC5T0800L/ JFC5T1100L/ JFC5T1125L/
JFC5T1150L/ JFC5T1160L/ JFC5T1200L/ JFC5T1250L/ JFC5T1300L/ JFC5T1315L/ JFC5T1350L/ JFC5T1400L/
JFC5T1500L/ JFC5T1600L/ JFC5T1630L/ JFC5T1700L/ JFC5T1800L/ JFC5T2100L/ JFC5T2120L/ JFC5T2125L/
JFC5T2150L/ JFC5T2160L/ JFC5T2200L/ JFC5T2250L/ JFC5T2300L/ JFC5T2400L/ JFC6F0100N/ JFC6F0160N/
JFC6F0200N/ JFC6F0250N/ JFC6F0300N/ JFC6F0315N/ JFC6F0350N/ JFC6F0400N/ JFC6F0500N/ JFC6F0630N/
JFC6F0750N/ JFC6F0800N/ JFC6F1100N/ JFC6F1125N/ JFC6F1150N/ JFC6F1160N/ JFC6F1200N/ JFC6F1250N/
JFC6F1300N/ JFC6F1315N/ JFC6F1350N/ JFC6F1400N/ JFC6F1500N/ JFC6F1600N/ JFC6F1630N/ JFC6F1800N/
JFC6F2100N/ JFC6F2120N/ JFC6F2150N/ JFC6F2200N/ JFC6F2250N/ JFC6F2300N/ JFC6F2320N/ JFC6F2400N /
JFC6F2500N/ JFC6F0100L/ JFC6F0160L/ JFC6F0200L/ JFC6F0250L/ JFC6F0300L/ JFC6F0315L/ JFC6F0350L/
JFC6F0400L/ JFC6F0500L/ JFC6F0630L/ JFC6F0750L/ JFC6F0800L/ JFC6F1100L/ JFC6F1125L/ JFC6F1150L/
JFC6F1160L/ JFC6F1200L/ JFC6F1250L/ JFC6F1300L/ JFC6F1315L/ JFC6F1350L/ JFC6F1400L/ JFC6F1500L/
JFC6F1600L/ JFC6F1630L/ JFC6F1800L/ JFC6F2100L/ JFC6F2120L/ JFC6F2150L/ JFC6F2200L/ JFC6F2250L/
JFC6F2300L/ JFC6F2320L/ JFC6F2400L/ JFC6F2500L/ JFC6T0100N/ JFC6T0160N/ JFC6T0200N/ JFC6T0250N/
JFC6T0300N/ JFC6T0315N/ JFC6T0350N/ JFC6T0400N/ JFC6T0500N/ JFC6T0630N/ JFC6T0750N/ JFC6T0800N/
JFC6T1100N/ JFC6T1125N/ JFC6T1150N/ JFC6T1160N/ JFC6T1200N/ JFC6T1250N/ JFC6T1300N/ JFC6T1315N/
JFC6T1350N/ JFC6T1400N/ JFC6T1500N/ JFC6T1600N/ JFC6T1630N/ JFC6T1800N/ JFC6T2100N/ JFC6T2120N/
JFC6T2150N/ JFC6T2200N/ JFC6T2250N/ JFC6T2300N/ JFC6T2320N/ JFC6T2400N/ JFC6T2500N/ JFC6T0100L/
JFC6T0160L/ JFC6T0200L/ JFC6T0250L/ JFC6T0300L/ JFC6T0315L/ JFC6T0350L/ JFC6T0400L/ JFC6T0500L/
JFC6T0630L/ JFC6T0750L/ JFC6T0800L/ JFC6T1100L/ JFC6T1125L/ JFC6T1150L/ JFC6T1160L/ JFC6T1200L/
JFC6T1250L/ JFC6T1300L/ JFC6T1315L/ JFC6T1350L/ JFC6T1400L/ JFC6T1500L/ JFC6T1600L/ JFC6T1630L/
JFC6T1800L/ JFC6T2100L/ JFC6T2120L/ JFC6T2150L/ JFC6T2200L/ JFC6T2250L/ JFC6T2300L/ JFC6T2320L/
JFC6T2400L/ JFC6T2500L



Unless otherwise agreed in writing, this document is issued by the Company subject to its General Conditions of Service printed overleaf, available on request or accessible at <http://www.sgs.com/en/Terms-and-Conditions.aspx> and, for electronic format documents, subject to Terms and Conditions for Electronic Documents at <http://www.sgs.com/en/Terms-and-Conditions/Terms-e-Documents.aspx>. Attention is drawn to the limitation of liability, indemnification and jurisdiction issues defined therein. Any holder of this document is advised that information contained hereon reflects the Company's findings at the time of its intervention only and within the limits of Client's instructions, if any. The Company's sole responsibility is to its Client and this document does not exonerate parties to a transaction from exercising all their rights and obligations under the transaction documents. This document cannot be reproduced except in full, without prior written approval of the Company. Any unauthorized alteration, forgery or falsification of the content or appearance of this document is unlawful and offenders may be prosecuted to the fullest extent of the law. Unless otherwise stated the results shown in this test report refer only to the sample(s) tested.

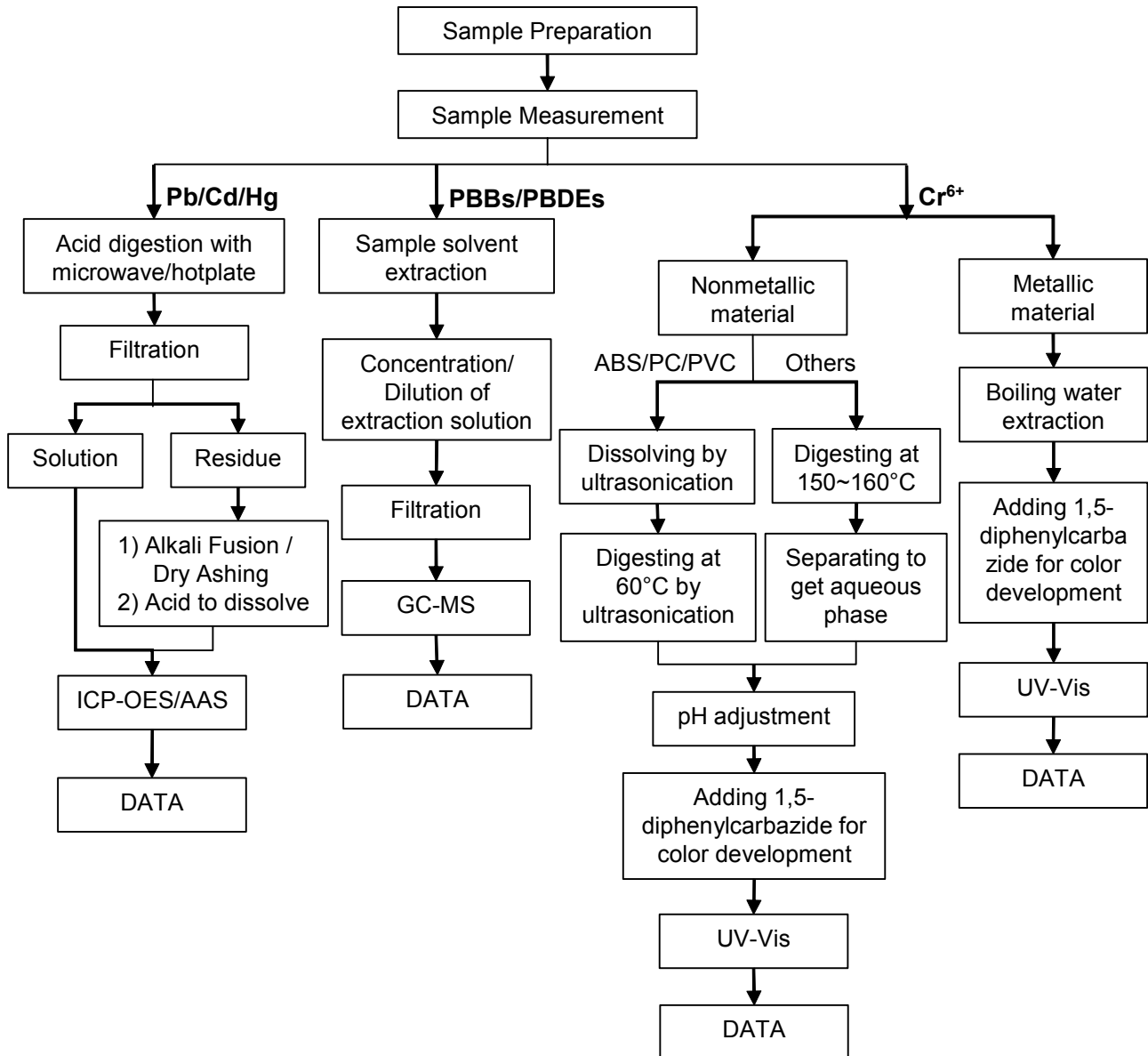
Attention: To check the authenticity of testing / inspection report & certificate, please contact us at telephone: (86-755) 8307 1443, or email: CN.Doccheck@sgs.com

SGS Bldg, No.4, Jianghao Industrial Park, No.430, Jihua Road, Bantian, Longgang District, Shenzhen, China 518129 t (86-755) 25328888 f (86-755) 83106190 www.sgs.com.cn
中国·深圳·龙岗区坂田吉华路430号江灏工业园4栋SGS大楼 邮编: 518129 t (86-755) 25328888 f (86-755) 83106190 e sgs.china@sgs.com

ATTACHMENTS

Pb/Cd/Hg/Cr⁶⁺/PBBs/PBDEs Testing Flow Chart

1) These samples were dissolved totally by pre-conditioning method according to below flow chart. (Cr⁶⁺ and PBBs/PBDEs test method excluded).

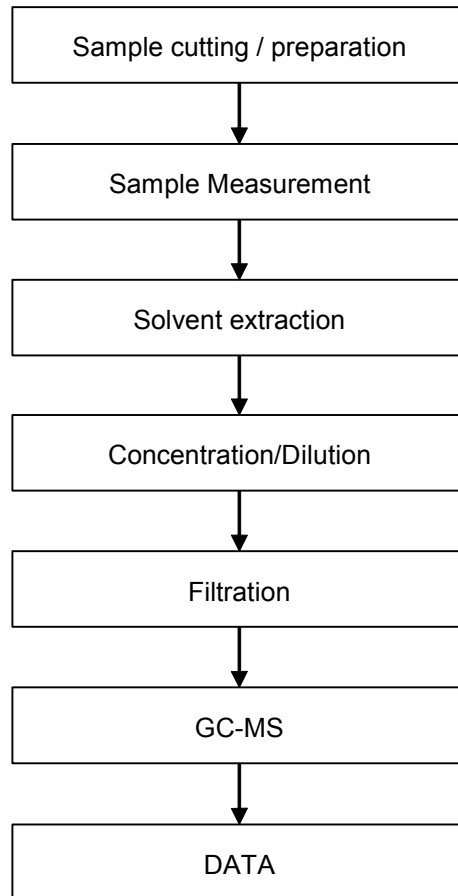


Unless otherwise agreed in writing, this document is issued by the Company subject to its General Conditions of Service printed overleaf, available on request or accessible at <http://www.sgs.com/en/Terms-and-Conditions.aspx> and, for electronic format documents, subject to Terms and Conditions for Electronic Documents at <http://www.sgs.com/en/Terms-and-Conditions/Terms-e-Documents.aspx>. Attention is drawn to the limitation of liability, indemnification and jurisdiction issues defined therein. Any holder of this document is advised that information contained hereon reflects the Company's findings at the time of its intervention only and within the limits of Client's instructions, if any. The Company's sole responsibility is to its Client and this document does not exonerate parties to a transaction from exercising all their rights and obligations under the transaction documents. This document cannot be reproduced except in full, without prior written approval of the Company. Any unauthorized alteration, forgery or falsification of the content or appearance of this document is unlawful and offenders may be prosecuted to the fullest extent of the law. Unless otherwise stated the results shown in this test report refer only to the sample(s) tested.

Attention: To check the authenticity of testing / inspection report & certificate, please contact us at telephone: (86-755) 8307 1443, or email: CN.Doccheck@sgs.com
 SGS Bldg, No.4, Jianghao Industrial Park, No.430, Jihua Road, Bantian, Longgang District, Shenzhen, China 518129 t (86-755) 25328888 f (86-755) 83106190 www.sgs.com.cn
 中国·深圳·龙岗区坂田吉华路430号江灏工业园4栋SGS大楼 邮编: 518129 t (86-755) 25328888 f (86-755) 83106190 e sgs.china@sgs.com

ATTACHMENTS

Phthalates Testing Flow Chart

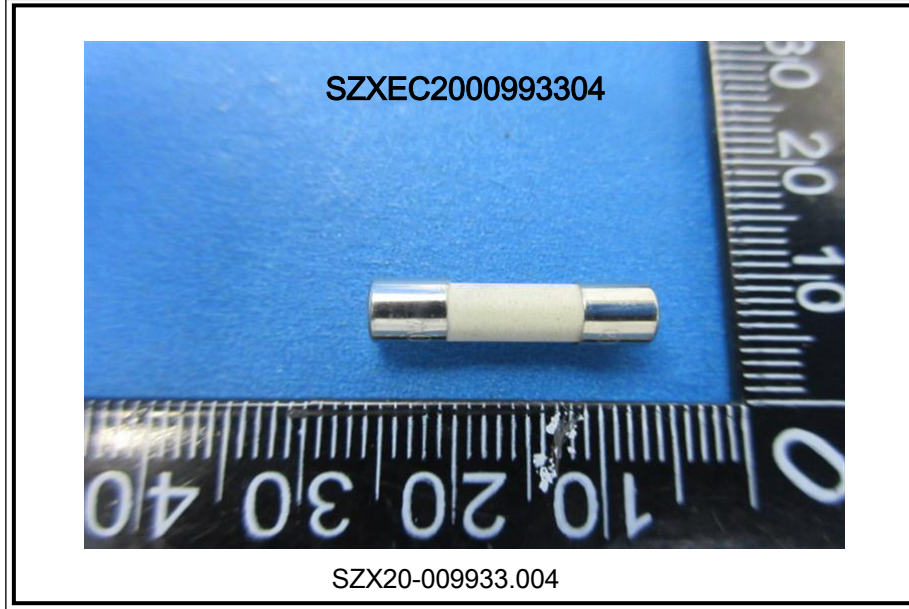


Unless otherwise agreed in writing, this document is issued by the Company subject to its General Conditions of Service printed overleaf, available on request or accessible at <http://www.sgs.com/en/Terms-and-Conditions.aspx> and, for electronic format documents, subject to Terms and Conditions for Electronic Documents at <http://www.sgs.com/en/Terms-and-Conditions/Terms-e-Documents.aspx>. Attention is drawn to the limitation of liability, indemnification and jurisdiction issues defined therein. Any holder of this document is advised that information contained hereon reflects the Company's findings at the time of its intervention only and within the limits of Client's instructions, if any. The Company's sole responsibility is to its Client and this document does not exonerate parties to a transaction from exercising all their rights and obligations under the transaction documents. This document cannot be reproduced except in full, without prior written approval of the Company. Any unauthorized alteration, forgery or falsification of the content or appearance of this document is unlawful and offenders may be prosecuted to the fullest extent of the law. Unless otherwise stated the results shown in this test report refer only to the sample(s) tested.

Attention: To check the authenticity of testing / inspection report & certificate, please contact us at telephone: (86-755) 8307 1443, or email: CN.Doccheck@sgs.com

SGS Bldg, No.4, Jianghao Industrial Park, No.430, Jihua Road, Bantian, Longgang District, Shenzhen, China 518129 t (86-755) 25328888 f (86-755) 83106190 www.sgs.com.cn
中国·深圳·龙岗区坂田吉华路430号江灏工业园4栋SGS大楼 邮编: 518129 t (86-755) 25328888 f (86-755) 83106190 e sgs.china@sgs.com

Sample photo:



SGS authenticate the photo on original report only

*** End of Report ***



Unless otherwise agreed in writing, this document is issued by the Company subject to its General Conditions of Service printed overleaf, available on request or accessible at <http://www.sgs.com/en/Terms-and-Conditions.aspx> and, for electronic format documents, subject to Terms and Conditions for Electronic Documents at <http://www.sgs.com/en/Terms-and-Conditions/Terms-e-Documents.aspx>. Attention is drawn to the limitation of liability, indemnification and jurisdiction issues defined therein. Any holder of this document is advised that information contained hereon reflects the Company's findings at the time of its intervention only and within the limits of Client's instructions, if any. The Company's sole responsibility is to its Client and this document does not exonerate parties to a transaction from exercising all their rights and obligations under the transaction documents. This document cannot be reproduced except in full, without prior written approval of the Company. Any unauthorized alteration, forgery or falsification of the content or appearance of this document is unlawful and offenders may be prosecuted to the fullest extent of the law. Unless otherwise stated the results shown in this test report refer only to the sample(s) tested.

Attention: To check the authenticity of testing / inspection report & certificate, please contact us at telephone: (86-755) 8307 1443, or email: CN.Doccheck@sgs.com
SGS Bldg, No.4, Jianghao Industrial Park, No.430, Jihua Road, Bantian, Longgang District, Shenzhen, China 518129 t (86-755) 25328888 f (86-755) 83106190 www.sgs.com.cn
中国·深圳·龙岗区坂田吉华路430号江灏工业园4栋SGS大楼 邮编: 518129 t (86-755) 25328888 f (86-755) 83106190 e sgs.china@sgs.com